



ESTATE AGENTS

[www.cwestateagents.co.uk](http://www.cwestateagents.co.uk)



## Grasmere Close, Winsford CW7 2ST

Offers in excess of £325,000

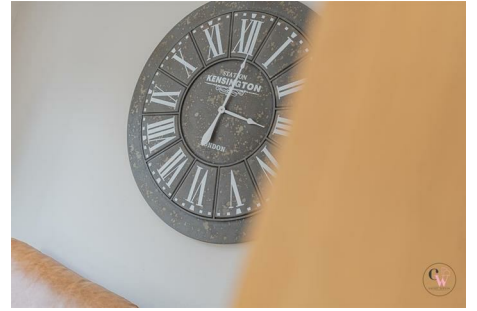


01606 514 152 | [info@cwestateagents.co.uk](mailto:info@cwestateagents.co.uk)  
@CWestateAgent | @CWestateAgents

# Grasmere Close

, Winsford, CW7 2ST

Offers in excess of £325,000



## Hallway

5'7" x 4'7" (1.704m x 1.411m)

## Lounge

16'5" x 13'7" (5.018m x 4.152m)

## Breakfast Kitchen

18'11" x 10'4" (5.774m x 3.159m)

## Utility Room

11'0" x 6'6" (3.369m x 2.001m)

## Downstairs WC

4'0" x 3'7" (1.228m x 1.116m)

## Office/Playroom

16'7" x 8'3" (5.066m x 2.521m)

## Landing

9'10" x 9'1" (3.020m x 2.775m)

## Bedroom One

11'5" x 11'2" (3.489m x 3.409m)

## En-Suite

8'4" x 3'1" (2.550m x 0.948m)

## Bedroom Two

11'4" x 11'2" (3.473m x 3.423m)

## Bedroom Three

10'4" x 8'11" (3.170m x 2.725m)

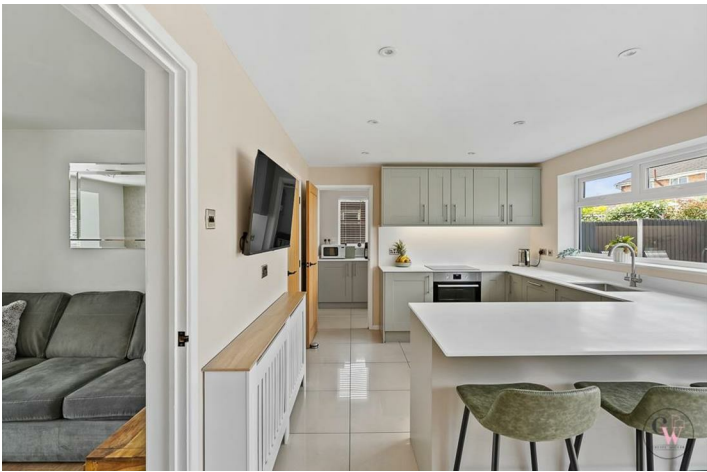
## Bedroom Four

9'4" x 8'1" (2.851m x 2.469m)

## Family Bathroom

6'0" x 6'7" (2.085m x 2.012m)

## Externally



## Floor Plan

Ground Floor  
58.8 sq.m. (633 sq.ft.) approx.



1st Floor  
49.4 sq.m. (532 sq.ft.) approx.



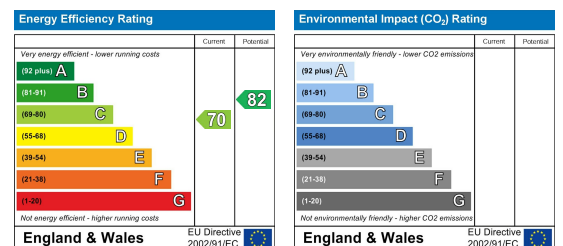
TOTAL FLOOR AREA: 108.2 sq.m. (1165 sq.ft.) approx.

Whilst every attempt has been made to ensure the accuracy of the floorplan contained here, measurements of doors, windows, rooms and any other items are approximate and no responsibility is taken for any error, omission or mis-statement. This plan is for illustrative purposes only and should be used as such by any prospective purchaser. The services, systems and appliances shown have not been tested and no guarantee as to their operability or efficiency can be given.  
Made with Metropix ©2025

## Viewing

Please contact us on 01606 514 152 if you wish to arrange a viewing appointment for this property or require further information.

## Energy Efficiency Graph



These particulars, whilst believed to be accurate are set out as a general outline only for guidance and do not constitute any part of an offer or contract. Intending purchasers should not rely on them as statements of representation of fact, but must satisfy themselves by inspection or otherwise as to their accuracy. No person in this firm's employment has the authority to make or give any representation or warranty in respect of the property.

01606 514 152 
 [info@cwestateagents.co.uk](mailto:info@cwestateagents.co.uk)  
 @CWestateAgent 
 @CWestateAgents